

SHUFFLE TECH™

OPERATING INSTRUCTIONS



For assistance:
email: info@shuffle-tech.eu
website: <http://www.shuffle-tech.eu>
Software Station, 1224 Budapest,
Damjanich u. 29 / HUNGARY

Please read these Operating Instructions before using the shuffler and save for future reference.

Congratulations and thank you for your purchase of a Shuffle Tech fully automatic shuffler. When used properly, it will bring years of high performance shuffling. Please fill in the information below and save for future reference. The serial number is on the bottom of your unit.

Date of Purchase _____
Purchased From _____
Dealer Address _____
Dealer Phone No. _____
Dealer Website Address _____
Serial No. _____

Attach receipt below:

WARNINGS

No-user serviceable parts inside machine. Please contact Shuffle Tech for any needed repairs. (See instructions for cleaning rollers and kickers on page 6.)

Use only AC adapters supplied by Shuffle Tech. Use of other adapters may cause fire, electrical shocks or malfunction and will void the warranty.

Always unplug A/C adapter before switching eject mode from Presentation Tray to Flush Mount (Top Eject).

General Safety Precautions

Basic safety precautions should always be followed to reduce the risk of fire, electric shock, or personal injury when using this shuffler.

1. Read and understand all instructions.
2. Follow all warnings and instructions marked on this shuffler.
3. Unplug this unit from power outlets before cleaning. Do not use liquid or aerosol cleaners. Use damp cloth for cleaning outside surfaces.
4. Do not use this shuffler near water or any liquids; do not expose to rain or moisture.
5. Place the shuffler securely on a stable flat surface or mount securely under table using flush mount kit. (Sold separately).
6. Do not place objects on the power cord. Install the shuffler where nobody can step or trip on the cord.
7. Do not overload wall outlets and extension cords. This can result in the risk of fire or electric shock.
8. Unplug this shuffler from the wall outlet when the following conditions occur:
 - a. When the power supply cord or plug is damaged or frayed.
 - b. If liquid has been spilled into the shuffler.
 - c. If the shuffler has been exposed to rain or water
 - d. If the shuffler has been dropped or physically damaged.
 - e. If the shuffler exhibits a distinct change in performance.

Standard Accessories (Included With Shuffler)

Universal AC/DC Adapter

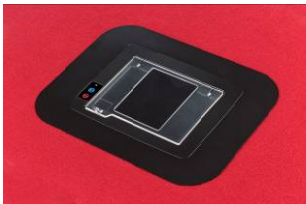


Set of Copag Cards (2 Decks)



Optional Accessories and Replacements (Extra Charge)

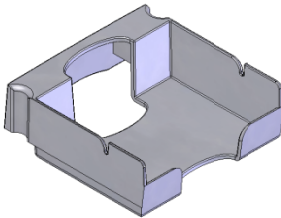
Flush Mount Kit



Set of Copag Cards (2 Decks)



Replacement Presentation Tray



Replacement Universal AC/DC Adapter



2-Year Extended Warranty (3 Years Total) also available from Shuffle Tech (North America Only; see website for details)

FOR BEST PERFORMANCE

For best performance, use the Copag Poker Size cards provided with the shuffler or other brands of cards that have been tested and approved by Shuffle Tech for use with our machine. For a current list of approved cards, visit our website www.shuffletech.com. Avoid using paper cards that may crease, warp, fray at the edges, or otherwise jam the shuffler.

Check the condition of the playing cards for optimal performance:

- Be sure playing cards are not bent or creased.
- Be sure playing cards are not dirty or greasy.

Do not move or shake the unit while in use.

Place the unit securely on a stable flat surface.

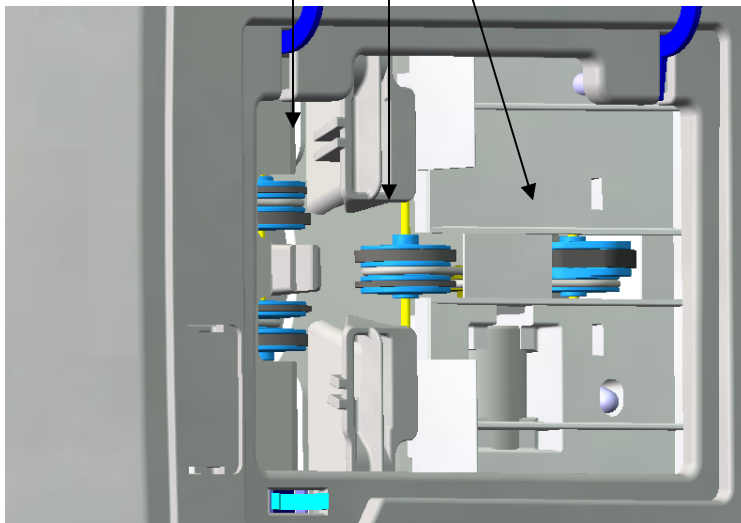
How to clean your Copag cards

Copag cards are made from PVC plastic and can be washed with warm water, a non-abrasive cloth and a mild neutral soap.

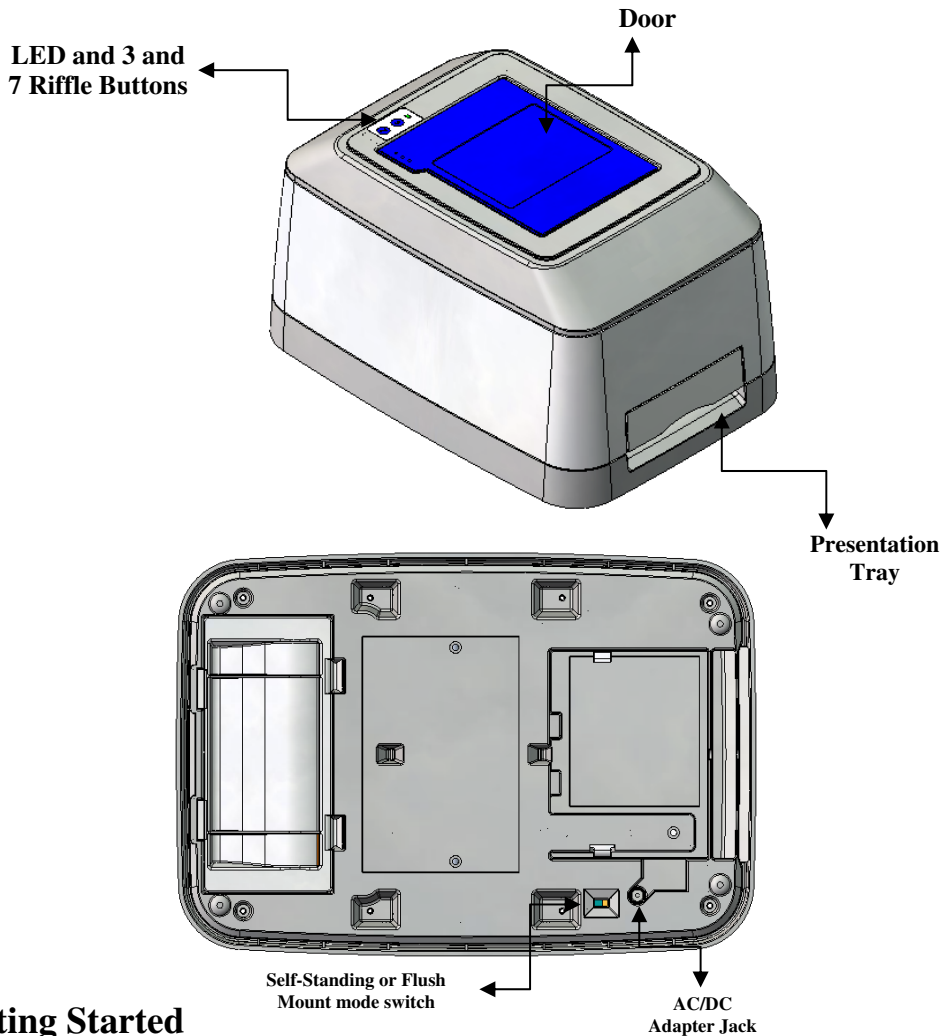
How to clean your shuffler

Use damp cloth to clean the outside of the shuffler. Rollers and kickers should be cleaned with a Q-tip dampened with isopropyl alcohol.

Rollers and Kickers



Shuffle Tech Operating Instructions



Getting Started

Plug the AC adapter into the jack and then a wall outlet. The LED will blink red and green several times while the machine conducts the reset/purge cycle. This confirms that no cards are stuck in any tray from previous use. Wait until LED light turns off or turns solid green before placing a deck of cards into the shuffler. If cards have been left in either side tray or if the elevator is not in the top position, the purge cycle will return the cards to the center tray and then return the cards to the top position (regardless of whether machine is switched to table-top or flush mount mode.) Be sure the shuffler is empty before placing a new deck into the center tray.

Be sure the lid is closed once the deck of cards is inserted into the shuffler. Shuffler will not function unless the lid is closed. If the lid is opened during the shuffling cycle, the machine will stop the shuffling process and begin the purge process.

3-Riffles

Press the (3) button to begin the casino dealer shuffling process. This is two riffles, one split, and a third riffle. Total time is between 35-40 seconds.

7-Riffles

Press the (7) button to begin the full randomization process. This is two riffles, one split, and five more riffles. Total time is between 70 and 80 seconds.

Self-Standing or Flush Mount Mode

(See the switch on the bottom of the machine.) Self-standing option will dispense cards into the presentation tray, whereas the flush mount option will bring the center elevator to the top so you can retrieve cards from the top of the unit. You can change mode by switching the eject mode switch at the bottom of the machine. (Warning: Always unplug shuffler before switching ejection modes.)

Unjamming

Shuffle Tech machines are designed to avoid jamming, but occasionally cards may jam inside the machine, and you will need to use your fingers to clear the cards and begin purge mode (by pressing and holding 3 and 7 buttons simultaneously) for 2 seconds. In rare cases you'll need to remove cards from the center tray and between the center and side trays, and then push the center tray to the bottom position to access cards stuck in the side tray. You will hear a "clicking" sound as you push the elevator down; this is OK, the machine is designed to allow this tray to be pushed down manually to access the side trays. Once cards are clear, press the (3) and (7) buttons simultaneously for 2 seconds to initiate purge mode and reset the machine.

LED Indicator

No Light or Solid Green	Shuffler is ready for use
Blinking Red and Green	Purge routine (Resetting)
Blinking Red	Shuffler is jammed
Blinking Green	Shuffling

Trouble Shoot

No power	Check the power source	
	Check the condition of the cards; damaged cards will jam the machine.	
Cards are not moving from trays.		Clean the rollers & kickers
LED continues blinking red	Remove cards and unplug to reset.	
The cards are not ejecting into the presentation tray	Is the presentation tray in the unit?	Switch to the Self-Standing mode

30-Day Satisfaction Guarantee

You may return products purchased directly from Shuffle Tech for a full-refund (excluding shipping and handling costs) for any reason within 30 days. The shuffler must be returned in original packaging and in good condition.

Limited Warranty

Shuffle Tech International, LLC (“Shuffle Tech”) warrants its products against defects in material or workmanship as follows:

1. For a period of one (1) year from the date of purchase, if the product is determined to be defective, Shuffle Tech will, at its option, either (a) repair your product with new or refurbished parts, or (b) replace it with new or refurbished product.
2. To obtain warranty service, you must request a Return Merchandise Authorization (“RMA”) from Shuffle Tech and deliver the merchandise freight prepaid to Shuffle Tech at the address designated on the RMA. Merchandise must be packaged in the original packaging or in other packaging adequate to avoid damage in shipment. Shuffle Tech reserves the right to demand original proof of purchase when the product cannot be verified by Shuffle Tech as purchased within one year prior to the RMA request. Repaired machines will be returned freight prepaid to customers within the continental United States.

Limited Warranty Limits and Exclusions

Shuffle Tech’s warranty does not cover cosmetic damage or damage due to acts of God, accident, misuse, power surge, abuse, negligence, commercial use, or modification of any part of the machine. This warranty does not cover damage due to improper operation or maintenance, connection to improper voltage supply, or attempted repair by anyone other than a facility authorized by Shuffle Tech to service the product.

This warranty is invalid if the factory-applied serial number has been altered or removed from the product.

Extended Warranty

Available online at www.shuffletech.com

Service/General Information

Software Station Bt.
1224 Budapest, Damjanich u. 29.
HUNGARY

Email: info@shuffle-tech.eu

Website: www.shuffle-tech.eu